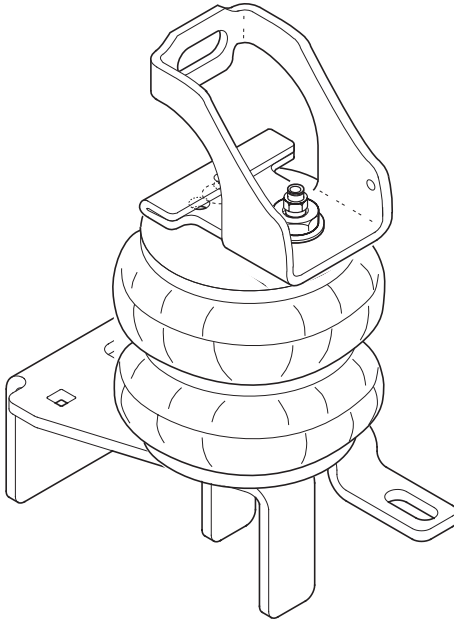


This kit does not require drilling into the frame.



INSTALLATION INSTRUCTIONS

Congratulations - your new Air Helper Springs are quality products capable of improving the handling and comfort of your vehicle. As with all products, proper installation is the key to obtaining all of the benefits your kit is capable of delivering. **Please take a few minutes to read through the instructions to identify the components and learn where and how they are used.** It is a good idea to start by comparing the parts in your kit with the parts list below.

The heart of the air helper spring kit is, of course, the air springs. Remember that the air helper springs must flex and expand during operation, so be sure that there is enough clearance to do so without rubbing against any other part of the vehicle.

Be sure to take all applicable safety precautions during the installation of the kit. The instructions listed in this brochure and the illustrations all show the left, or driver's side of the vehicle. To install the right side assembly simply follow the same procedures.

PARTS LIST

AIR SPRING	7701	2	3/8"-16 FLANGE LOCK NUT	6
UPPER BRACKET DRIVER'S SIDE	5462	2	3/4"-16 HEX HEAD NUT	4
LOWER BRACKET	5547	1	3/8" LARGE FLAT WASHER	2
PASSENGER'S SIDE LOWER BRACKET	5546	1	3/4" LARGE FLAT WASHER	8
BRACKET CLAMP	5567	2	5/16" FLAT WASHER	4
1/2" SPACER	5477	2	3/4" INTERNAL TOOTH LOCK WASHER	2
AIR LINE TUBING		1	3/4" LOCK WASHER	2
3/8"-16 X 10" CARRIAGE BOLT		4	HEAT SHIELD	1004
3/8"-16 X 3/4" HEX HEAD BOLT		4	INFLATION VALVE	3032
3/8"-16 X 2 1/2" FLAT HEAD BOLT		2	STRAIGHT FITTING	3046
3/4"-16 X 3" HEX BOLT		2	THERMAL SLEEVE	2
			NYLON TIE	6
			CAUTION TAG	2

WARNING:

Do not inflate this assembly when it is unrestricted. The assembly must be restricted by the suspension or other adequate structure. Do not inflate beyond 100 psi. Improper use or over inflation may cause property damage or severe personal injury.

The air springs in this kit have a minimum pressure of 5 psi and maximum of 100 psi after the truck is loaded.

Your kit includes separate inflation valves and air lines for each air helper spring. This will allow you to level your vehicle from side to side as well as from front to back. If you would rather have a single valve inflation system, your dealer can supply the optional "T" fitting.

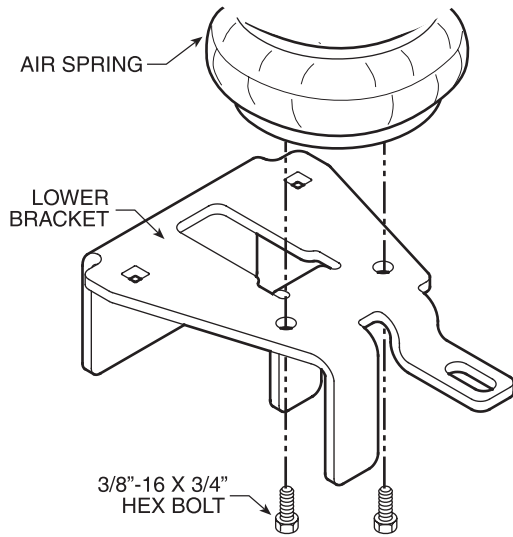
IMPORTANT!

For your safety and to prevent possible damage to your vehicle, do not exceed the maximum load recommended by the vehicle manufacturer (GVWR). Although your Air Helper Springs are rated at a maximum inflation pressure of 100 psi, this pressure may allow you to carry too great a load on some vehicles. It is best to have your vehicle weighed once it is completely loaded and compare that weight to the maximum allowed. Check your vehicle owner's manual or data plate on driver's side door for maximum loads listed for your vehicle.

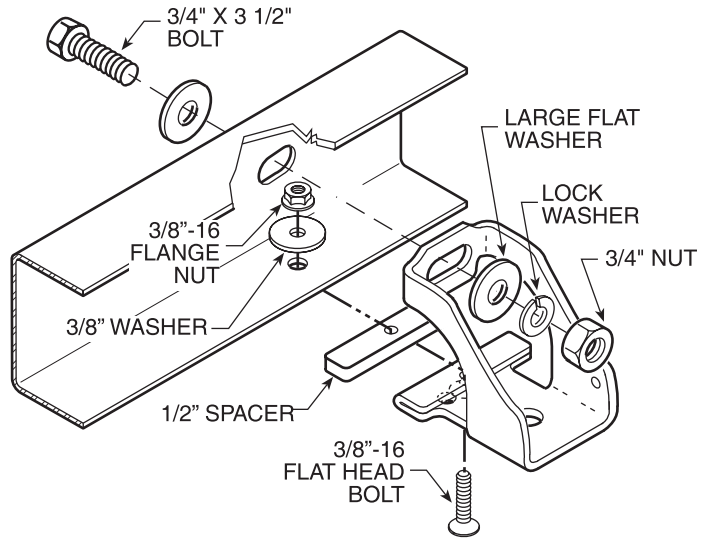
When inflating your Air Helper Springs, add air pressure in small quantities, checking pressure frequently during inflation. The air spring requires much less air volume than a tire and, therefore, inflates much quicker.

Remove the negative battery cable. It is not necessary to jack up the truck to install this Ride-Rite kit, if you DO, please use chocks in front of the front tires. Also, use jack stands beneath the truck's rear axle that are properly rated to support the trucks weight.

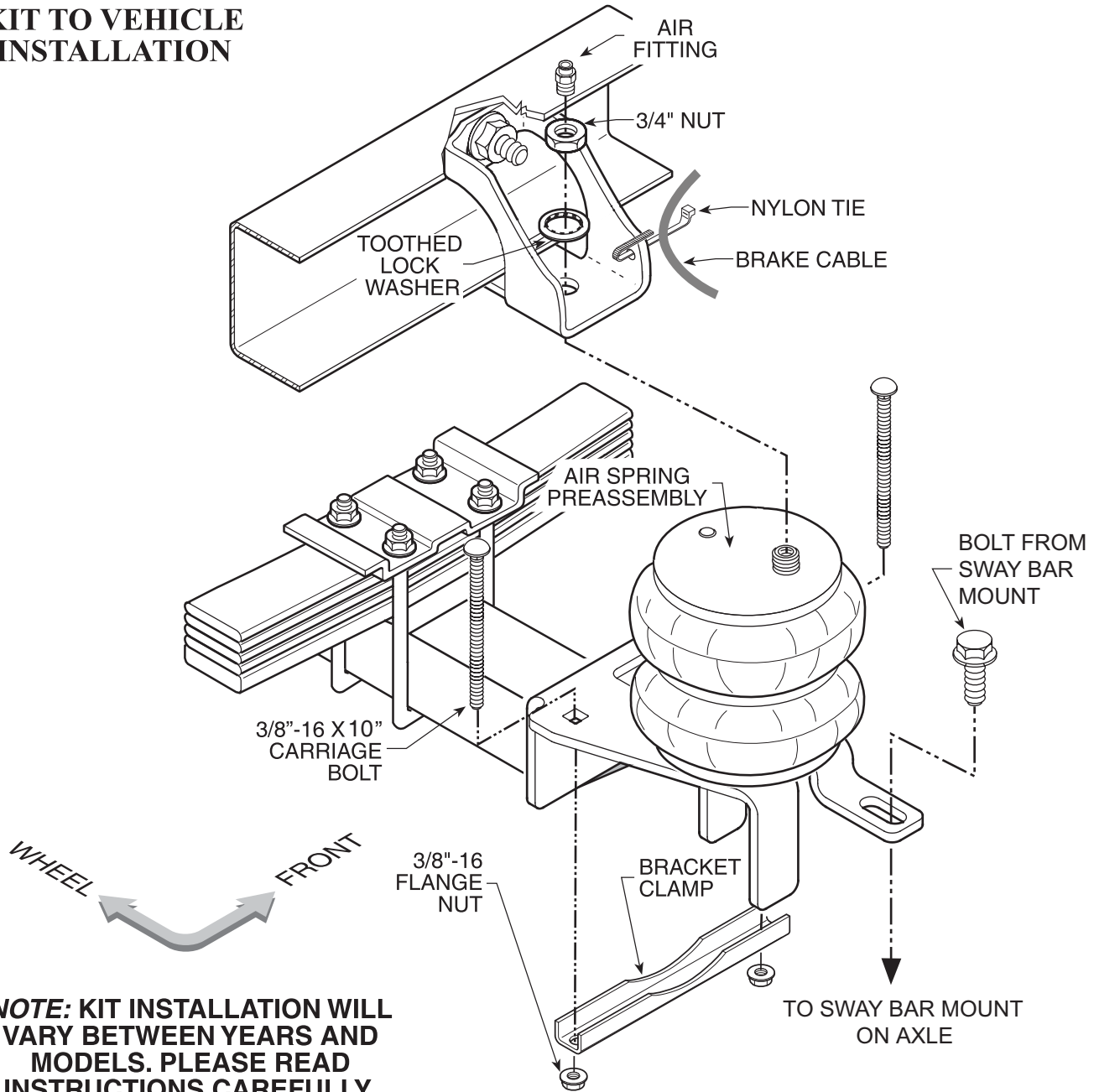
LOWER BRACKET ATTACHMENT



UPPER BRACKET ATTACHMENT



KIT TO VEHICLE INSTALLATION



NOTE: KIT INSTALLATION WILL VARY BETWEEN YEARS AND MODELS. PLEASE READ INSTRUCTIONS CAREFULLY.

FIGURE "A"

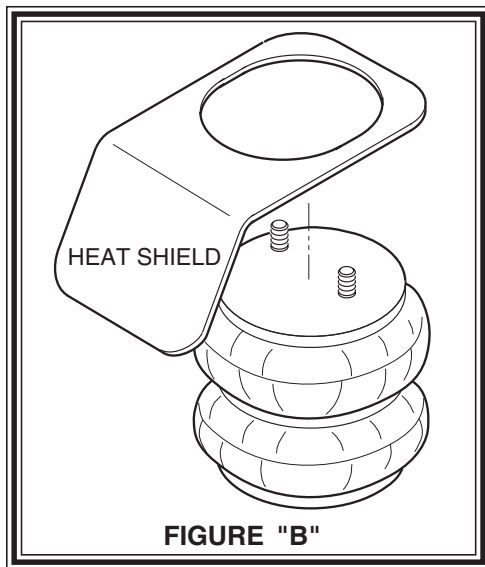


FIGURE "B"

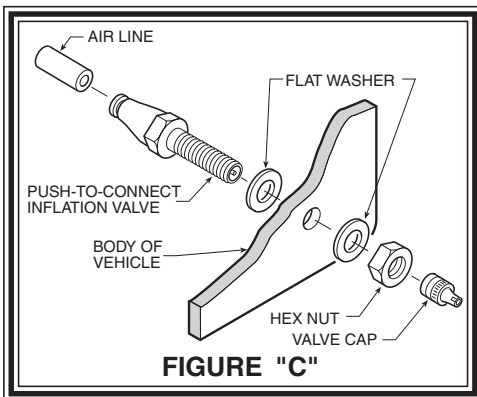


FIGURE "C"

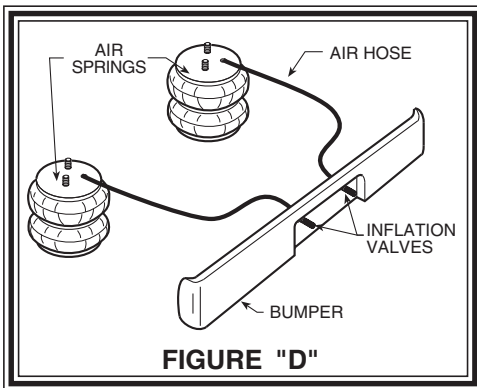


FIGURE "D"

STEP 1 - PREPARE THE VEHICLE

Your vehicle is equipped with rubber jounce bumpers attached to the frame directly above the axle. Remove these bumpers by un-bolting from the inside of the frame flange. These bumpers will not be re-used with this kit.

STEP 2 - UPPER BRACKET INSTALLATION

Insert the 3/8"-16 x 2-1/2" flat head bolt into the upper bracket and then slide the spacer bracket over the bolt. Install the upper bracket onto the frame. Make sure that no part of the vehicle's wiring will be pinched between the upper bracket and the frame. Tighten the 3/8"-16 flat head bolt with a 3/8"-16 flange nut and the large 3/8" washer. Install the 3/4"-16 x 3" hex bolt thru the existing hole in the frame rail and upper bracket. Secure the 3/4" bolt with a 3/4" flat washer, 3/4" lock washer, and 3/4" hex nut.

If you have existing hitch hardware, the 3/4" bolt should be long enough to extend thru the upper bracket, truck frame and the hitch brackets (if present). Be sure to use at least one of the large flat washers and lock washer before putting the 3/4" nut onto the bolt. Finally, the emergency brake cable will have to be tie-wrapped out of the way using the hole provided in the upper bracket. *See Figure "A"*.

STEP 3 - LOWER BRACKET INSTALLATION

Select one air helper spring and lower bracket. Install two 3/8"-16 X 10" carriage bolts as shown in *figure "A"*. Fasten the air spring to the lower bracket using two 3/4" hex bolts. *See Figure "A"*. Remove the flanged hex bolt from the sway bar mount on top of the axle. Next attach the lower bracket assembly to the axle using the carriage bolts, bracket clamp, and two 3/8"-16 flange nuts. Reinstall the bolt removed from the sway bar mount. *See Figures "A"*.

STEP 4 - AIR SPRING INSTALLATION

The heat shield will be used on the right side of the truck where the exhaust pipe is closest to the air spring. It is placed between the upper bracket and the top of the air spring. The top of the air spring has a alignment pin which will be put into the smaller hole in the upper bracket towards the front of the truck on both sides. When the air spring is in place and properly lined up, place the internal tooth lock washer and the 3/4" hex nut onto the stud of the air spring. On the right side move the heat shield into alignment before tightening the nut on the air spring. Make sure the heat shield will not interfere with the normal operation of the air spring or the vehicle's suspension. Do not position the face of the shield directly over the axle, as it may contact the axle on full suspension compression. *See Figure "B"*. Install the air fitting into the stud of the air spring. Tighten the air fitting securely to engage the orange thread sealant.

STEP 5 - AIR LINE INSTALLATION

Uncoil the air tubing and cut it into two equal lengths. **DO NOT FOLD OR KINK THE TUBING.** Try to make the cut as square as possible. Insert one end of the tubing into the elbow fitting installed in the top of the air helper spring. Push the tubing into the fitting as far as possible. Select a location on the vehicle for the air inflation valves. This can be on the bumper or the body of the vehicle, as long as it is protected so the valves will not be damaged. Drill a 5/16" hole and install the air inflation valve using two 5/16" flat washers per valve as supports. Route the tubing from the air helper spring to the inflation valve, avoiding direct heat from the engine, exhaust pipe, and away from sharp edges. The air line tubing should not be bent or curved sharply as it may buckle with time. Secure the tubing in place with the nylon ties provided. Push the end of the air line tubing into the inflation valve as far as possible. *See Figures "C" & "D"*.

